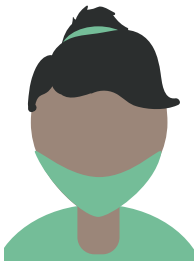


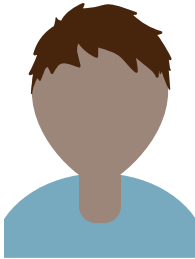
Working in Health and Social Care

There will be an estimated **27,400** job openings in the Health and Social Care Sector over the next 10 years in Edinburgh, Midlothian and East Lothian



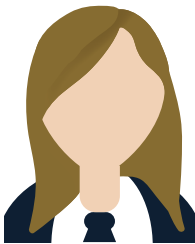
Surgeon

Carrying out operations on patients who need them. They may have been injured, have a worsening health condition or wish to have plastic surgery.



Dental Nurse

Looking after people when they visit the dentist. You'd assist the dentist as they give treatments and help with other aspects of patient care.



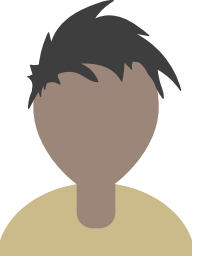
Care Service Manager

Responsible for managing a care service, e.g. a day care service or a service which provides support to people in their own homes.



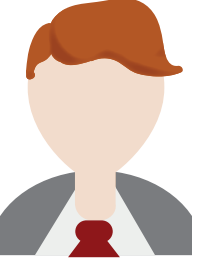
Pharmacist

Helping people get the right medicines and drugs and use them safely to treat illnesses and disease.



Healthcare Support Worker

Helping ill people with their practical daily tasks, either in hospital or in a patient's own home.



Clinical Psychologist

You would help people with mental and emotional difficulties to make positive changes in their thinking and behaviour.